



2024 CROSS COUNTRY FINALS INFORMATION

- **INFORMATION BULLETIN**
- **TIME SCHEDULE**
- **BOYS AND GIRLS TEAM QUALIFIER FORMS**
- Spectator admission is \$11.00 per person. Tickets must be purchased online using the GoFan digital ticketing site. Cash WILL NOT be accepted on site. Credit Cards can be used onsite. In order to expedite entry, it is best to purchase your tickets ahead of time.
- Digital tickets will be sold via GoFan and can be found at:
<https://gofan.co/event/1731012?schoolId=MHSAA>
- **TEAM PARKING** for busses will be through Parking Gate A and team entry will be at Gate 24A and Team entrance through pedestrian tunnel (see map)
- Visibly worn wristbands will allow coaches and athletes to enter the facility.
- Infield access through the tunnel gate (see map) WILL BE allowed for team vehicles only under 9 feet in height

1. LOCATION: Michigan International Speedway, 12626 US-12, Brooklyn, MI 49230

- A. All access to Brooklyn Road can be reached from the north off of M-50 or from the south off US-12.
- B. Team Bus Parking: enter at Gate A or Vehicular Tunnel (**PLEASE SEE MAP FOUND ONLINE AT MHSAA.com**)
- C. The Fan Plaza will accommodate ADA parking and can be accessed by Gate A– Team and Bus parking is accessed by the Gate A entrance/Vehicular Tunnel. Spectator Parking is in Lot 11 and Lot 3
- D. The Grandstand entrance and ticket booths will be the spectator entrance - Gate 24 – Spectators will use the Pedestrian tunnel to access the MIS infield.
- E. Teams who park outside the Grandstands will use Gate 24 to access the pedestrian tunnel to access the MIS infield and team areas.
- F. The vehicle tunnel gate will only be used for team access in vans less than 9 feet in height and only with the required team parking pass.
- G. Trams WILL BE available for transport to infield from team and spectator parking areas.

2. FINALS QUALIFIER PACKET INCLUDES:

- A. A parking pass, which will permit your vehicle to park in the team parking area in the Fan Plaza if desired.
- B. **TEAM QUALIFIERS:** eight (8) team member admission wristband passes and three (3) wristband passes for the coach and/or trainer.
- C. **INDIVIDUAL QUALIFIERS** will receive one (1) wristband pass plus two (2) others including the coach or trainer.
- D. **Visibly worn wristbands** will allow coaches and athletes to enter the facility and allow coaches and officials access to restricted areas such as the infield and course.
- E. Team entrance/exit to the Fan Plaza parking area will be through the pedestrian tunnel or through grandstands and across track with access behind the press box in the Fan Plaza and parking areas.

3. FINAL MEET PACKET PICK UP /APPAREL PURCHASE

- A. Friday packet pick up will be at Michigan International Speedway in the **MICHIGAN ROOM from 1:00 p.m. to 5:30 p.m.** and starting at 7:30 a.m. on race day and throughout the day of the race.
- B. Course preview from the starting line to the 3 mile mark on course. The last 1/10th mile can be viewed by walking on the race track but not on course will also be allowed from **1:00 p.m. to 5:30 p.m.** only on Friday, November 3th – Weather permitting.
- C. No tents or vehicles may be left in the infield of MIS and the track must be cleared by 5 p.m. for course set up and preparation.
- D. Parking for the Friday packet pickup and course preview time will be done in the awards area and lots closest to pit row or in the Fan Plaza by way of the Pedestrian Tunnel or Cross over track entrance outside of Gate 24. (**PLEASE SEE MAP ONLINE at MHSAA.com**)
- E. Apparel sales from EA GRAPHICS will take place on Friday from 1:00 p.m. to 5:30 p.m. and on Saturday from 8 a.m. to 4 p.m.
- F. Saturday packet pickup will start at 7:30 a.m. in the **MICHIGAN ROOM** located in the buildings behind the finish area and by pit row.
- G. The coach is responsible for picking up the meet packet and timing tag on Friday or Saturday.
- H. Box assignments will be posted online at MHSAA.com as well as in the MICHIGAN ROOM.

4. CHANGE AND CORRECTIONS FORM

- A. Coaches of team qualifiers may change team personnel for the Finals if those student-athletes appear on the schoolmaster eligibility list.
- B. Roster Changes, including spelling, grade corrections, individual scratches, and team substitutions, may be done by the coach through athletic.net PRIOR to Monday, October 28 at 9 p.m. Any changes after Monday, October 28, will not make the MHSAA Finals program and will not be reflected in the registration packet. Following the Monday, October 28, 9 p.m. deadline, all further changes must be made using [THIS FORM](#) (also found online at MHSAA.com on the XC page)
- C. Individual qualifiers may not be substituted.
- D. Paper substitution forms will be available at packet pick up. The Google change form [THIS FORM](#) (the preferred method) will also be active through the change deadline.
- E. Division 4 and 3 teams must make changes by 9 a.m. on Saturday, November 2.
- F. Division 2 and 1 teams must make changes by NOON on Saturday, November 2.
- G. Please ensure to meet and follow the changes and corrections deadlines for each team's race. **Late substitutions may be accepted up to 5 minutes before the start of each race. A late substitution is one after the published deadline has expired.** A coach can then turn in a change form and \$20 to the timer/scorer if this option is needed. The head official at the start line (start platform) will accept these changes up to 5 minutes prior to the race start and the timer/scorer will change prior to the results being made official. Failure to have an athlete's bib changed properly is a basis for disqualification.
- H. Turn the Change and Corrections Form into the packet pick-up area at the Michigan Room.

5. COURSE DESCRIPTION AND PREVIEW

- A. While the start and finish have restricted areas, coaches and officials will be allowed along the course during races.
- B. The entire course will be open for previewing on Friday, November 1 from 1:00 p.m. to 5:30 p.m. and prior to your race on Saturday. Please be aware of races and other racers. The final 160 meters can be reviewed from just off the course on Friday and Saturday.
- C. Competitors and coaches may not be able to preview the course after the three-mile mark on Saturday, November 4.
- D. Please do not cross the timing pads at the one-mile, two-mile, and three-mile marks, while previewing the course prior to your race.
- E. Mile markers and timing clocks will designate the one-mile, two-mile, and three-mile marks. As a reminder, the timing split @ the 3-mile mark is NOT the finish and athletes need to continue to the Finish line.
- F. The use of painted boundary lines, both inside and outside, will define the course. Additionally, artificial boundary markers, such as orange barrels will also be used. Athletes should stay between these lines and must go around all other natural or man-made barriers.
- G. Additional flagging may be posted throughout the course: "Red to left", "Yellow to right" and "Blue straight"
- H. Runners must cross both finish line timing pads and continue through the chute.

6. COMPETING TEAM EXPECTATIONS

- A. Schools will defray their own expenses for participating in the Finals.
- B. Coaches and other school officials are responsible for supervising team members at the Final site.
- C. If extra credentials are needed and approved by the MHSAA, this pick-up will be in the Michigan room at packet pick up or at the front desk of the Super 8 Hotel in Brooklyn.

- D. Wristbands are allowed for competitors, alternates, and school approved coaches only. Any violation of this policy will result in future restrictions on wristbands and passes for that school and coach.
- E. Please help clean up the team area by using the supplied trash receptacles. Please bring out what you bring in.
- F. It is suggested that you arrive at least one hour before race time to ensure adequate prep time, race packet pick-up, team warm-up, and start-line check-in.
- G. Racers (teams and individuals) should be at the start line for check-in no later than 15 minutes before their race time.
- H. Coaches should ensure and are responsible for their runner or team showing up in the correct division and race using the attached race schedule.

7. TIMING, SCORING AND RESULTS

Superior Timing will administer timing and scoring.

Race Bibs

- A. Racers must wear their assigned race bib on the front **and back** of their singlet with the pins provided. The bib colors are Blue for the team and Red for individual runners.
- B. Race bibs may **not** be altered (i.e., cut, folded, wrinkled, etc.)
- C. The front race bib with the affixed timing chip will be used to time and identify each runner.
- D. The runners are asked not to stop a watch or other device, as doing so blocks the race bib from the view of finish officials, including the timers, and slows the completion of the results.

Scoring and Ties

- A. Rule 8, Sections 2 and 3 of the National Federation Track & Field/Cross Country Rule Book will be followed.
- B. All competitors are expected to move beyond the finish line, run/jog to their position in the exit area, and fast walk/run/jog beyond the finish line to avoid injury or impeding other incoming runners.
- C. Close finishes are determined using the torso on finish cameras for the LP Final.

Results

- A. Preliminary results will be posted at superiortiming.com. A result may be appealed for review for 20 minutes after the complete preliminary results are posted. It becomes official at the later of I) the expiration of that period or II) when any appeal is decided and any required adjustment is made.
- B. Official Results will then be posted at MHSAA.com and Athletic.net Split times, if available, will be at superiortiming.com
- C. Written appeals can be made via a form found at the packet pick-up area (Michigan Room at the LP Final). They can be turned in at this location during the appeal period to meet officials.
- D. Preliminary online live results and live team results will be posted online at MHSAA.com and at <https://www.superiortiming.com/>

8. AWARDS

- A. Each division and gender:
 - 1 Trophy First Place – Team 1 Trophy Second Place - Team
 - 7 Medals First Place – Team 7 Medals Second Place - Team
 - 30 Medals - Top 30 Finishers overall in a Division.
- B. Teams (top 2 in each race) and their coaches, as well as Individual award winners (TOP 30) who qualify for an award – either a trophy or medal should come to the MICHIGAN ROOM for awards staging at least 15 minutes prior to the awards ceremony start time.

- C. Division 4 & 3 awards will begin at 12:15 p.m.
- D. Division 2 & 1 awards will begin at 4:30 p.m.

9. COMPETITION RULES & INSTRUCTIONS

STARTING LINE:

- A. Pre-race uniform and bib checks will be done 15 minutes prior to each race. Teams should be at the line for this required check.
- B. Final race instructions will be given five minutes before each race. At the conclusion of those instructions, athletes should remove their sweats and immediately report to the assigned positions on the starting line, weather permitting.
- C. Teams and individuals must use the assigned starting boxes unless reassigned a box by meet administration or officials because of race course conditions.
- D. The assigned box must be used, and moving to another box without an official determining that the move would be allowed would be grounds for disqualification.

TEAMS:

- A. Qualifying teams may compete with a maximum of seven entries and a minimum of one entry.
- B. At least five individuals must finish to be considered a complete team.
- C. Individuals on the Master Eligibility List may be used as substitutes for team entries only. There are no substitutions for racers in the individual races.

JEWELRY: Athletes may wear jewelry during competition without penalty. This includes watches and sunglasses.

USE OF INHALERS: The use of an inhaler during competition containing a prescription drug designed to alleviate the asthmatic condition is not considered to be an illegal aid as long as a physician's statement documenting the need of the athlete to use the prescription is presented to the meet director/referee prior to the beginning of the meet.

HEAD ATTIRE: Head attire that may be worn during competition without regard to color or logo and if it fits within the sportsmanship guidelines of XC. Questionable head attire may be required to be removed if considered unsportsmanlike.

UNIFORM RULE: National Federation Rule 4-3 will be enforced as written regarding competitor uniforms.

MHSAA XC Rule Adaptations: Should the uniform jersey hang below the waistband of the shorts, jerseys must be tucked in.

A bib may not be obstructed to stop a watch, which could result in a runner not being given a place or time. Please advise your athletes to wait until after the finish line to stop their watches.

Referees, umpires, and meet monitors throughout the course will be watching competitors closely for compliance with the rules of the course and sportsmanship.

Coaches or others may not use bikes or other artificial transportation at MIS.

10. APPEALS

- A. Appeals in writing denoting a rule or missed athlete will first come to the games committee before making the final decision on any appeal. The length of the appeal time is 20 minutes after the posting of results online.
- B. The Games committee shall have final authority over rules disputes.

Games Committee:

Rudy Godefroidt, ATOM, official's coordinator, Meet Referee
Doug Kelly, Meet Monitor
Cody Inglis, MHSAA XC Director
Brad Buter, Meet Manager
Two Coach Representatives

11. MEDICAL INFORMATION

- A. A doctor, seven certified athletic trainers, and student athletic trainers will be on duty during the day to assist with any injuries or emergencies.
- B. In addition, G-1 will serve as the first aid headquarters with a medical doctor and Athletic Trainer available throughout the day. There will be at least two ambulances with EMT's on standby.
- C. AED's will be available in the Michigan Room, at the Start and Finish Lines and in the Fan Plaza at the entrance.

12. DIGITAL TICKETING INSTRUCTIONS – GO FAN –

- A. **Tickets are \$11.00 for all spectators. There will be NO CASH purchases for on-site ticket purchases; all ticket purchases must be done via gofan.co**

Digital tickets will be sold via GoFan and can be purchased for all races at:

<https://gofan.co/event/1731012?schoolId=MHSAA>

These one-minute training videos will give you a glimpse into the simplicity of GoFan. Please look them over if you have questions regarding Go Fan

[How to buy tickets](#)

[How to use tickets](#)

[How to access and share tickets](#)

[How to find your tickets](#)

FAQ's regarding GoFan digital ticketing and Cross Country Finals:

How many tickets can be purchased?

There is no limit to the number of tickets that can be purchased for the MHSAA Cross Country Finals in 2024.

How do spectators view their purchased tickets?

They can click "View Tickets" in their emailed receipt, sign in to their Go Fan account, or open in the GoFan app. For fastest entry into the game, fans should pull up their tickets prior to reaching the gate. Here is another one-minute video that can help with this process.

<https://www.youtube.com/watch?v=H0Xhso4QobA>

Can fans transfer tickets to others?

Yes, purchased tickets can be transferred to children, spouse, family or anyone else via text, email or copying a link. See the video above.

Can spectators buy tickets at the gate?

YES, it is very easy. Go to **gofan.co** on your phone, search for MHSAA Cross Country Finals, click on that event, and purchase the ticket. If you can't purchase via a phone you can use a credit/debit card at the gate.

13. SPECTATOR INFORMATION

- A. \$11 admission charge for all spectators. There is no parking fee.
- B. All tickets **must be** purchased via the Go Fan app or website. **There will be NO CASH purchases for on-site ticket purchase, all ticket purchases must be done online.**
- C. The ticket area to the grandstand (Gate 24A) will be the entrance this year at MIS.
- D. Spectators will be allowed access to MIS via the Pedestrian Tunnel located immediately after entry. The pedestrian tunnel goes under the track, allowing access to the infield area and course viewing. Grandstand access is also allowed at MIS for the XC Finals from section 2 to 20.
- E. Animals will not be allowed to enter Michigan International Speedway, pets (even on leashes) will not be allowed unless proper documentation can support a service animal designation.
- F. Trams will be available for spectators. ADA accessible parking and transportation inside of MIS will be available in the spectator parking area. (See attached map.)
- G. DRONES ARE NOT ALLOWED AT Michigan International Speedway except for official MHSAA filming and streaming. Charcoal/Gas Grills are not allowed on infield parking areas. NO bikes or other means of artificial transportation are allowed at MIS.
- H. Suites have been available for 2024 and are strictly first come, first serve. More information can be found online at MHSAA.com on the Cross Country pages. Suites along pit row and in the upper press box may be purchased through MIS. More information is available online at MHSAA.com.
- I. MHSAA Apparel -T-Shirts/Sweatshirts –T-shirt and apparel sales will be at Michigan International Speedway near the Packet pickup location for teams and in the Fan Plaza entrance for spectators.
- J. MHSAA livestreaming/announcing of the XC Finals will be available. For more details please go to MHSAA.com and the XC Finals page.
- K. XC Finals Live timing and scoring is available at www.superiortiming.com during each race. Races will be video reviewed. The chip time will be shown in tenths, while the video reviewed and potential corrected time will show in hundredths.

14. UNMANNED AERIAL VEHICLE (DRONE) POLICY

The use of unmanned aerial vehicles ("UAV"), also known as drones, is prohibited for any purpose by any persons at MHSAA tournament venues. Tournament management shall refuse admission or entry to anyone attempting to use a UAV; and if necessary, tournament management shall remove anyone attempting to use a UAV and/or confiscate the UAV until the event has been completed. For purposes of this policy, a UAV is any aircraft without a human pilot aboard the device.

An exception to this policy may be made in specific cases for MHSAA broadcast partners, provided the management of the tournament facility permits the presence of UAVs for broadcast purposes under the control of the MHSAA.

15. TOBACCO AND ALCOHOL POLICY

Use of alcohol or tobacco, including e-cigarettes or other smoking devices, is prohibited at MHSAA tournament events by players, coaches and spectators.

Turn in to packet pick-up room (Michigan Room)
Changes and Corrections due 9:00 a.m. for D4 and D3 races
Changes and Corrections due 12:00 p.m. for D2 and D1 races

CHANGES AND CORRECTIONS ONLY

**MHSAA CROSS COUNTRY CHAMPIONSHIPS
 TEAM QUALIFIERS**

Change in Runners:

Please fill out this sheet if you will be making any changes in your team personnel.

SCHOOL _____

Division: 1 2 3 4 Circle proper division and gender Gender: BOYS GIRLS

SUBSTITUTIONS FOR TEAM QUALIFIERS

Bib No	Removed runner – Last Name, First Name	Grade	New Runner – Last Name, First Name	Grade

COACHES NAME: _____

COACHES CELL # _____

Please ensure to follow the changes and corrections deadlines for each team’s race. **Late substitutions may be accepted up to 5 minutes before the start of each race. A late substitution is one after the published deadline has expired.** A coach can then turn in a change form and \$20 to the timer/scorer if this option is needed. The head official at the start line (start platform) will accept these changes up to 5 minutes prior to the race start and the timer/scorer will change prior to the results being made official. Failure to have an athletes bib changed properly is a basis for disqualification.



CC-4

CROSS COUNTRY APPEAL FORM

1. Appeal is to reverse a ruling or correct an error.
2. Protest is to express dissatisfaction with a decision or procedure.
3. The rules address the appeal process, not "the protest".

WHAT IS SUBJECT TO APPEAL?

1. Misapplication of a rule.
2. Clerical errors in placing or a missed athlete (20 min. Limit).
3. Team scoring errors (48 hour limit).
4. Misapplication or failure to follow a procedure in the terms and conditions of competition announced in advance.

WHAT IS NOT SUBJECT TO APPEAL?

1. Judgment decisions.
2. Decision by finish judges/timers that does not involve misapplication of a rule.

WHAT IS THE APPEAL PROCESS?

1. Head coach shall verbally inform meet monitor.
2. Head coach shall file in writing on the Appeal Form.
3. Include competitor name, school, number, and specific event.
4. The specific rule.
5. A brief description.
6. Give form to meet monitor.

(PLEASE PRINT)

EVENT _____

INDIVIDUAL _____

RULE
REFERENCE _____

DESCRIPTION OF THE APPEAL:

IS JURY OF APPEALS REQUESTED TO REVIEW THIS ISSUE?

- NO
 YES

The Jury of Appeals shall have the final authority.

2024 MHSAA Cross Country Finals

MIS SCHEDULE:

*MIS WILL BE OPEN FROM 1 PM
TO 5:30 PM ON FRIDAY FOR
PACKET PICKUP, COURSE
PREVIEW AND APPAREL SALES*

FRIDAY, NOV. 1

1:00-5:30 pm Packet Pick-Up, Course Preview and T-shirt sales at Michigan International Speedway.

SATURDAY, NOV. 2

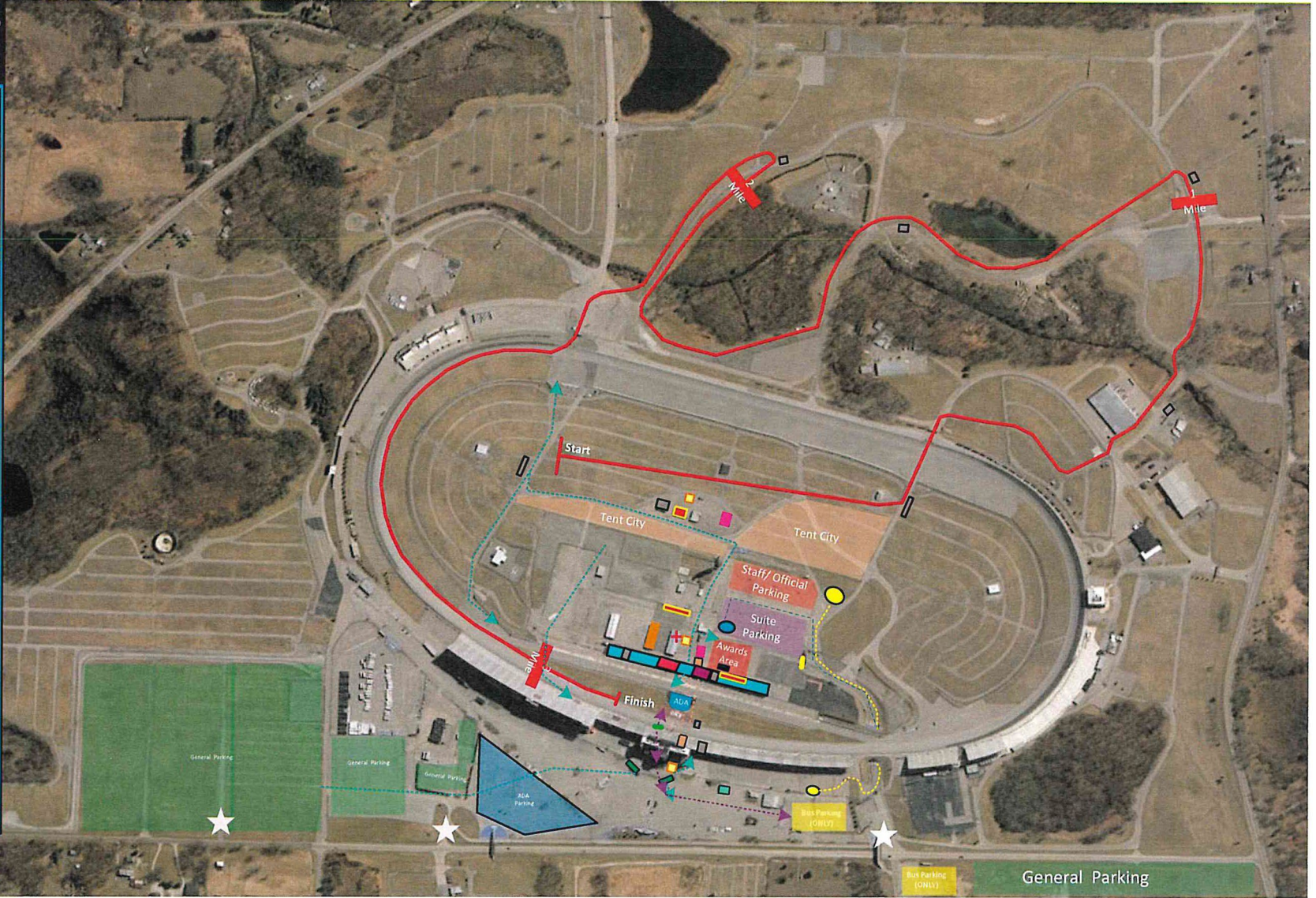
7:30 am Entrance Opens (Packet pick-up, T-shirt sales and course review)
9:00 am Changes and Corrections due for D4 and D3
9:30 am Division 4 Boys
10:10 am Division 3 Boys
10:50 am Division 4 Girls
11:30 am Division 3 Girls
12:00 pm Changes and corrections due for D2 and D1
12:15 pm Division 4 & 3 Awards Presentation
1:30 pm Division 2 Boys
2:10 pm Division 1 Boys
2:50 pm Division 2 Girls
3:30 pm Division 1 Girls
4:15 pm Division 2 & 1 Awards Presentation

2024 MHSAA Cross Country Finals




Cross Country Finals

- Ke**
- MHSAA Course
 - ← Spectator Flow
 - ← Team Flow
 - 0 Team Tram
 - Ticket Building
Ticket and E-ticket
 - D ADA Cart
Gate
Pedestrian Tunnel
 - D Restrooms or Porta Johns
 - Program Sales
 - Merchandise Sales
 - Concessions
 - I Athletic Trainer
 - Pit Road Suites
Team Warming
 - Room
Results Room
 - Awards Room
 - Awards Stage
 - Front Stretch
Cross Over Gate
 - Road Closed



2024 MHSAA Cross Country Finals

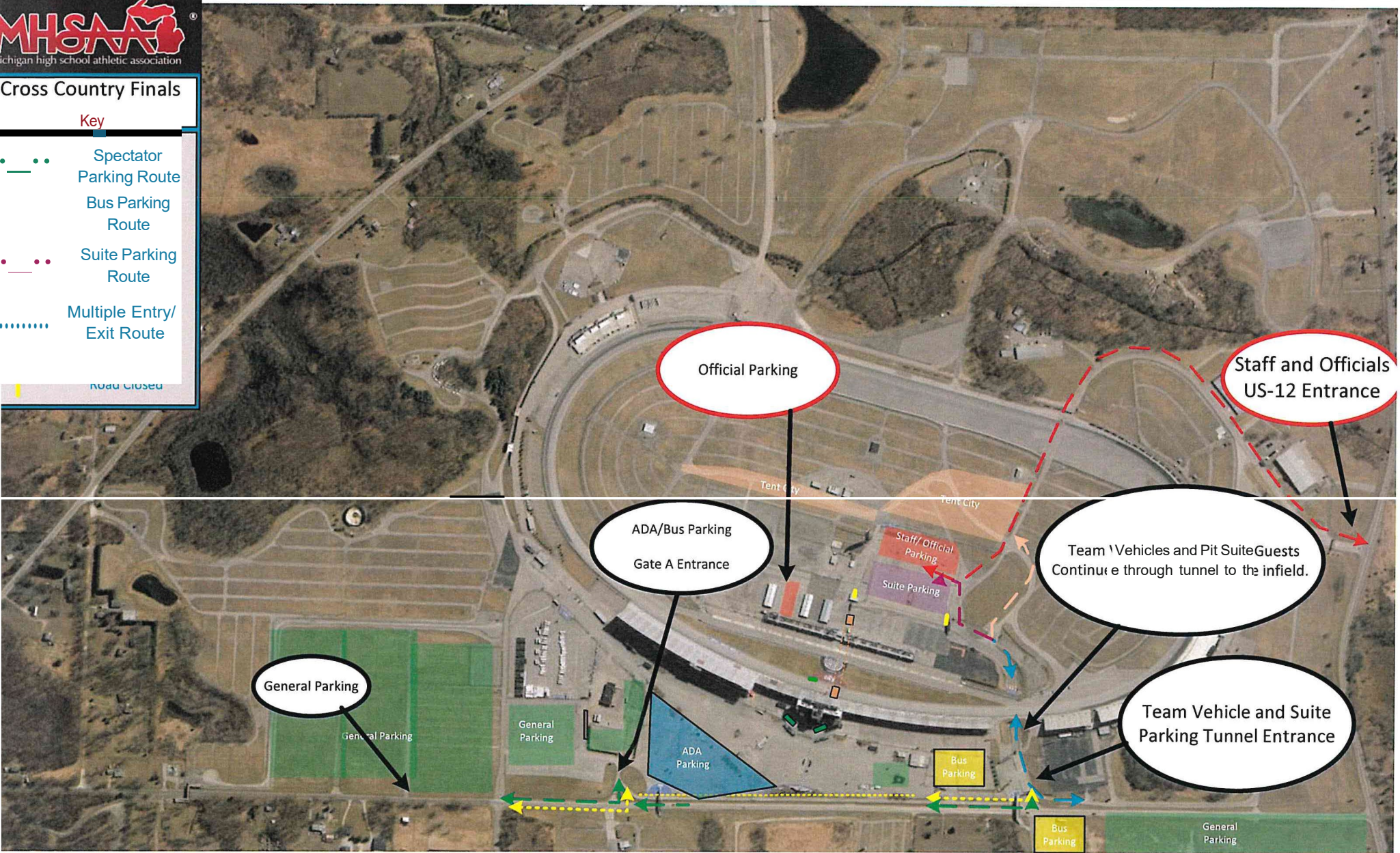
Parking and Entry Routes



Cross Country Finals

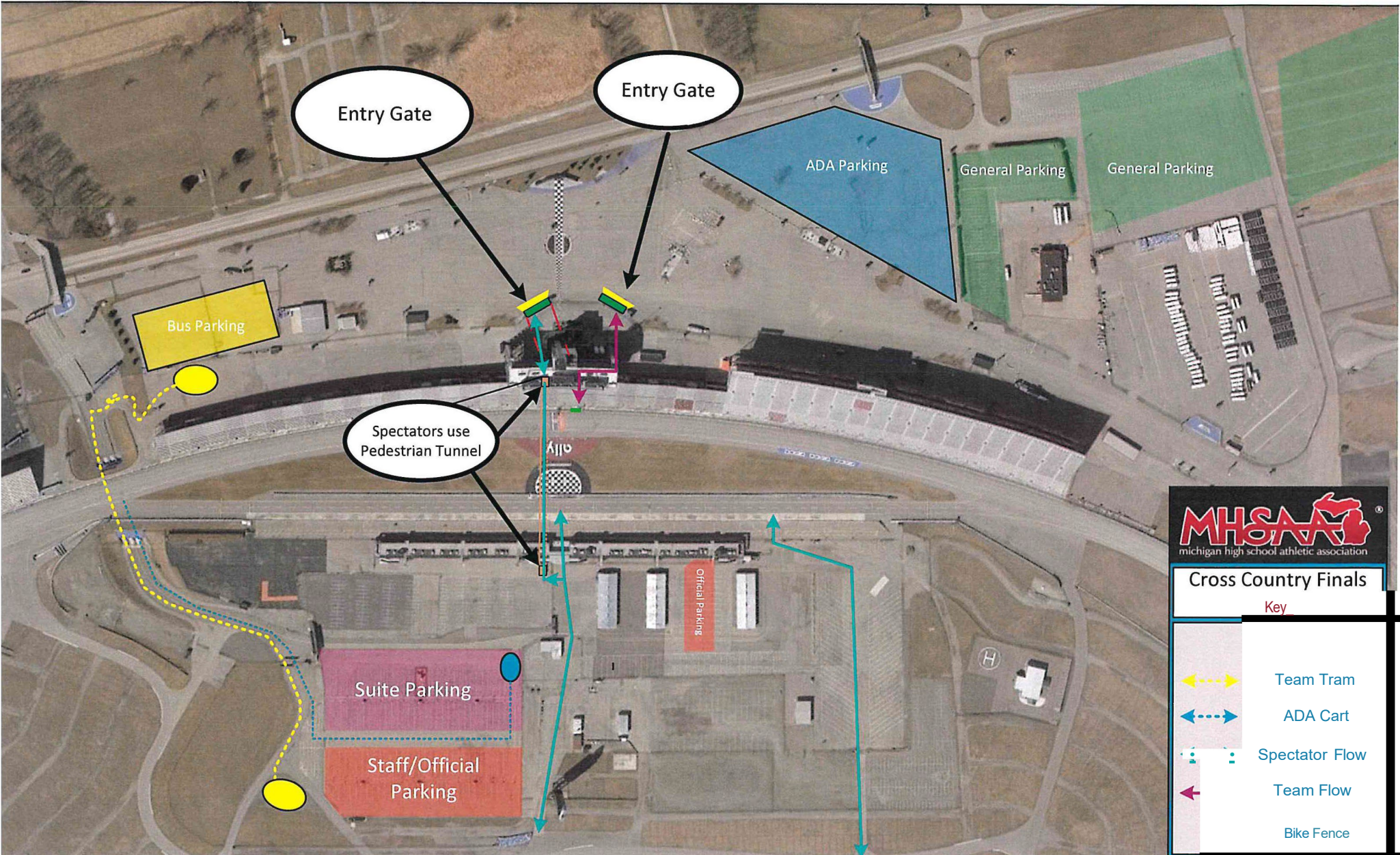
Key

- Spectator Parking Route
- Bus Parking Route
- Suite Parking Route
- Multiple Entry/Exit Route
- Road Closure



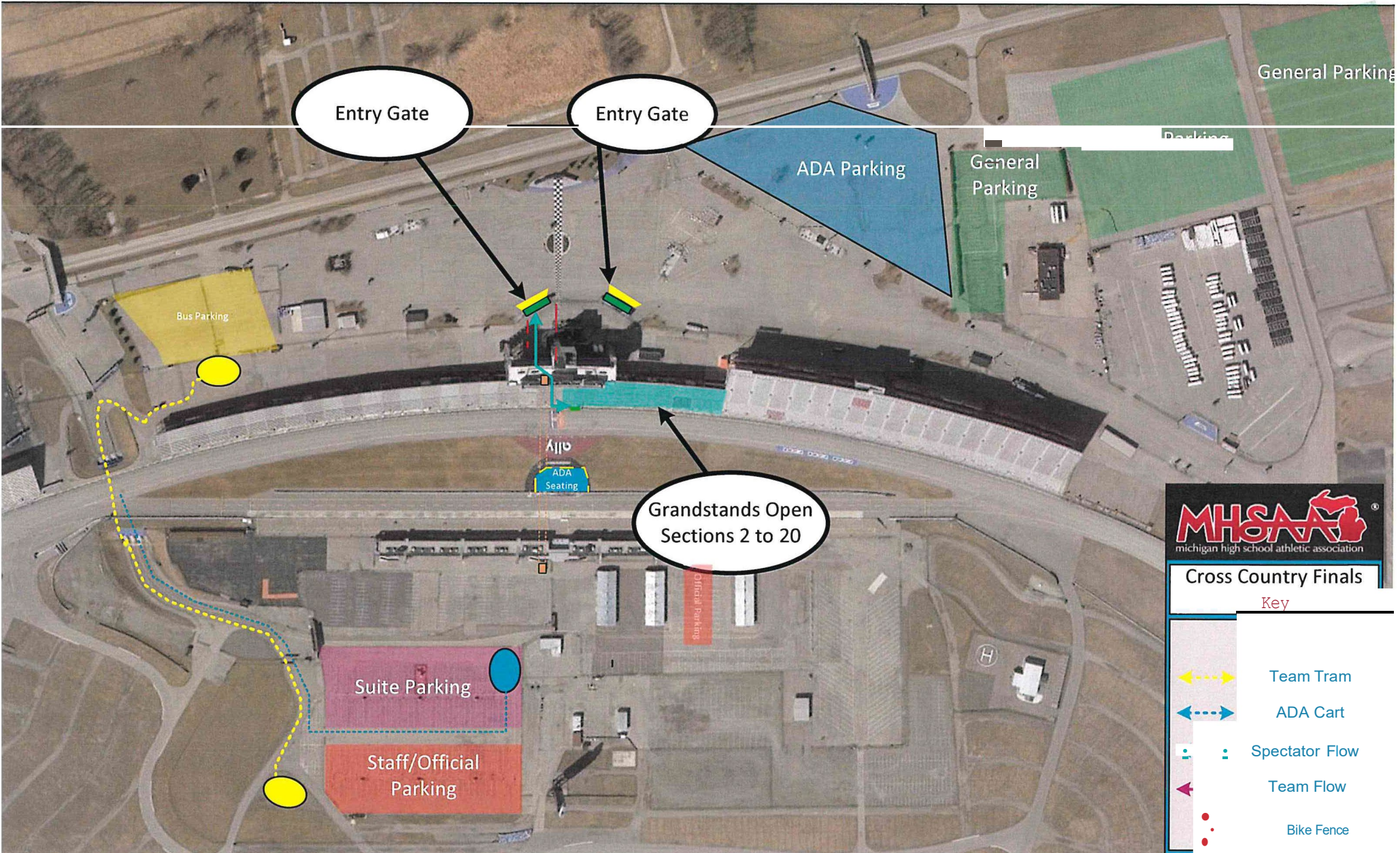
2024 MHSAA Cross Country Finals

Entry Gates & Onsite Transportation



2024 MHSAA Cross Country Finals

Grandstand Seating



MHSAA
michigan high school athletic association

Cross Country Finals

Key

- Team Tram
- ADA Cart
- Spectator Flow
- Team Flow
- Bike Fence

2024 MHSAA Cross Country Finals Pit Road Suite & Garage Area

